

UElandy Inc.

Xiangcheng District, Suzhou,

Jiangsu Province P.R, 215143 China

www.uelandy.com

Refer to website for regional contact information.

| | | | |
|-----------------|--------------------------------------|------------------|------------|
| Product Name: | UE Endo-free Plasmid Midiprep Kit | Lot ID: | 220930KA2 |
| Catalog Number: | UE-MD-EP-25 | Expiration Date: | 09/29/2025 |

Quality Control

Spectrophotometric Analysis

- Acceptable Range for A260/A280=1.8±0.15.
- Comparison of the Test Sample to a previously tested Standard. Acceptable range for Test Sample is ≤ ±10% of Standard, based upon spectrophotometric analysis. The “Standard” is a previously tested and validated sample.

Restriction Analysis

- 1 μ g of plasmid is digested to completion by EcoRI

Electrophoretic Analysis

- Agarose gel electrophoresis of the samples exhibits a defined plasmid band with no degradation.
- Agarose gel electrophoresis of the samples exhibits no contaminating RNA.
- Agarose gel electrophoresis of the samples exhibits no contaminating bacterial genomic DNA.

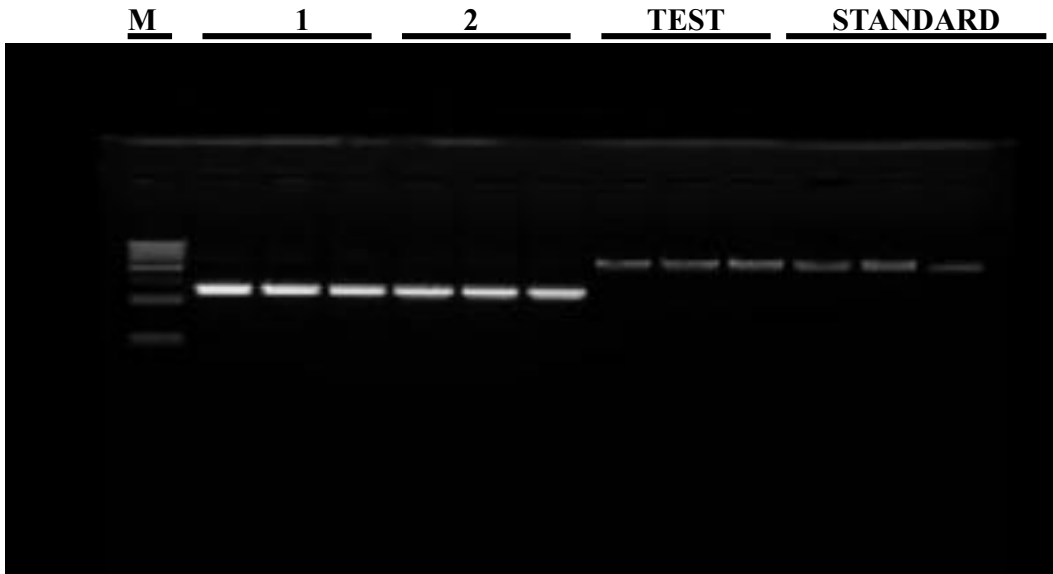
Endotoxin Level Analysis

- Endotoxin level of Test Sample is $\leq 0.1\text{EU}/\mu\text{g}$

Gel Image and Test Data

| Item | Test Date | | | | | | Sample |
|---------------------|-----------|----------|----------|----------|----------|----------|---|
| | 1 | 2 | 3 | 4 | 5 | 6 | |
| A260 | 1.5368 | 1.2656 | 1.3038 | 1.2291 | 1.1966 | 1.3145 | 1,2,3 are duplicate Test Samples 4,5,6 are duplicate Standards |
| A280 | 0.8443 | 0.7260 | 0.7736 | 0.6481 | 0.6692 | 1.7114 | |
| A260/A280 | 1.8201 | 1.7431 | 1.6855 | 1.8963 | 1.7880 | 1.8487 | |
| Yield (µg) | 134.4667 | 110.7372 | 114.0825 | 107.5428 | 104.7033 | 115.0204 | |
| Electrophoresis | ✓ | ✓ | ✓ | ✓ | ✓ | ✓ | PASS |
| No visible RNA | ✓ | ✓ | ✓ | ✓ | ✓ | ✓ | |
| Endonuclease digest | ✓ | ✓ | ✓ | ✓ | ✓ | ✓ | |

| | | | | | | | |
|--|--------|--------|--------|--------|--------|--------|------|
| [Test Sample/Standard] Yield Difference | 9.784% | | | | | | PASS |
| Endotoxin Level(EU/μg) | 0.0383 | 0.0426 | 0.0736 | 0.0480 | 0.0978 | 0.0962 | PASS |



※1 and 2 respectively represent the test and standard enzyme digestion

UElandy Inc. warrants and represents that all inspections and testing for the article described above have been performed at UElandy Inc. QC laboratory located on-site at the manufacturing plant. UElandy Inc. manufacturing facility is located at Room 302, Building 1, No.18& Chunyao Road, Xiangcheng District, Suzhou, Jiangsu Province P.R, 215143 China

(QC Inspector) *tian qin zheng*

(Approver) *Qin Hua Yu*